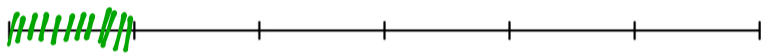
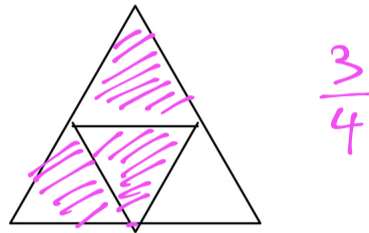
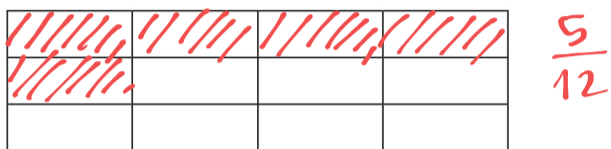


Leçon du 23/10/19.

# Les fractions.

$$\frac{6}{8} ; \frac{8}{8} ; \frac{4}{8}$$



n° 4001

a)  $27 \div 3 = 9$

d)  $24 \div 6 = 4$

g)  $56 \div 8 = 7$

b)  $34 \div 2 = 17$

e)  $81 \div 9 = 9$

h)  $32 \div 8 = 4$

c)  $35 \div 7 = 5$

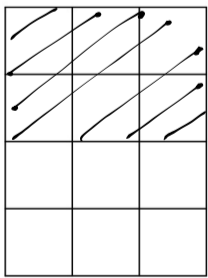
f)  $66 \div 3 = 22$

j)  $32 \div 4 = 8$

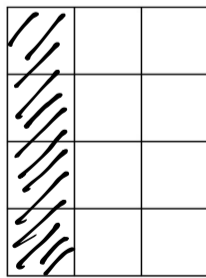
## Exercice 7880



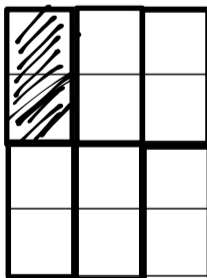
On considère les trois rectangles représentés ci-dessous :



$\mathcal{R}_1$



$\mathcal{R}_2$



$\mathcal{R}_3$

Représenter sur chacun des rectangles les partages suivants :

1. la moitié du rectangle  $\mathcal{R}_1$ .
2. le tiers du rectangle  $\mathcal{R}_2$ .
3. le sixième du rectangle  $\mathcal{R}_3$ .

n° 7882

1) a)  $\frac{1}{5} + \frac{1}{5} + \frac{1}{5} + \frac{1}{5} = \frac{4}{5}$

b)  $\frac{1}{4} + \frac{1}{4} + \frac{1}{4} + \frac{1}{4} = \frac{4}{4} = 1$

$$2) \ a) \quad 4 \times \frac{1}{7} = \frac{4}{7} \quad b) \quad 6 \times \frac{1}{6} = \frac{6}{6} = 1.$$

