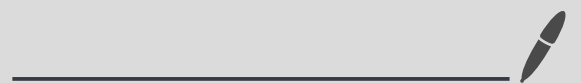


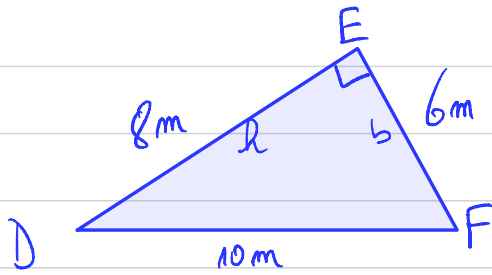
17/11/20

Liçnième :

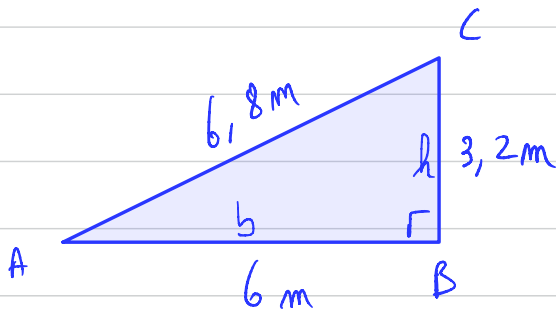
TD: Aires et périmètres.



n° 6456: Aire du triangle EDF.

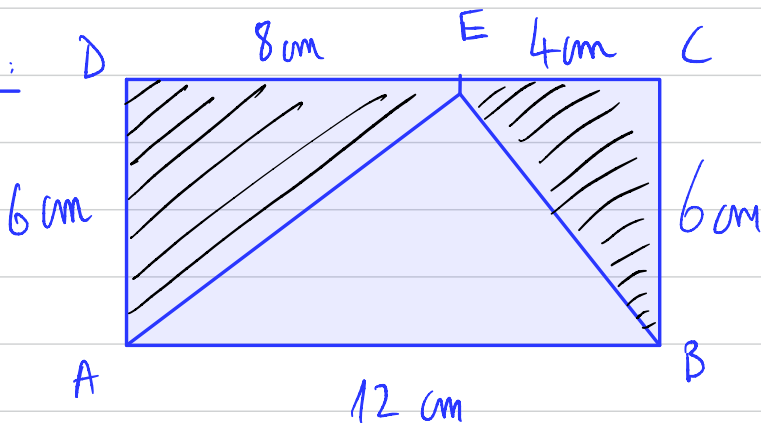


$$A_{\text{aire}} = \frac{b \times h}{2} = \frac{6 \times 8}{2} = \frac{48}{2} = 24 \text{ m}^2$$



$$A_{\text{aire}} = \frac{b \times h}{2} = \frac{6 \times 3,2}{2} = 3 \times 3,2 = 9,6 \text{ m}^2$$

n° 1696:



$$\binom{m}{p} = \binom{m-1}{p-1} + \binom{m-1}{p}$$

$$= \binom{m-2}{p-2} + \binom{m-2}{p-1} + \binom{m-2}{p-1} + \binom{m-2}{p}$$

$$1) a) \text{ Aire du rectangle} = L \times l = 6 \times 12 = 72 \text{ cm}^2 = \binom{m-2}{p} + 2 \binom{m-2}{p-1} + \binom{m-2}{p-2}$$

$$1) b) \left. \begin{aligned} \text{Aire de ADE} &= \frac{8 \times 6}{2} = \frac{48}{2} = 24 \text{ cm}^2 \\ \text{Aire de ECB} &= \frac{4 \times 6}{2} = \frac{24}{2} = 12 \text{ cm}^2 \end{aligned} \right\} \text{ Aire grise} = 24 + 12 = 36 \text{ cm}^2$$

$$c) \text{ Aire de AEB} = \text{Aire du rectangle} - \text{aire grise} = 72 - 36 = 36 \text{ cm}^2$$

2) On aurait pu calculer l'aire autrement:

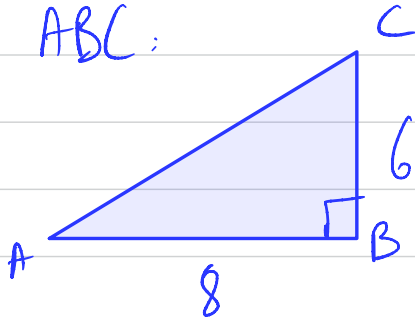
$$A = \frac{12 \times 6}{2} = 6 \times 6 = 36 \text{ cm}^2$$

n° 7887:

$$\text{Aire du triangle PNM} = \frac{25 \times 8,8}{2} = 110 \text{ cm}^2.$$

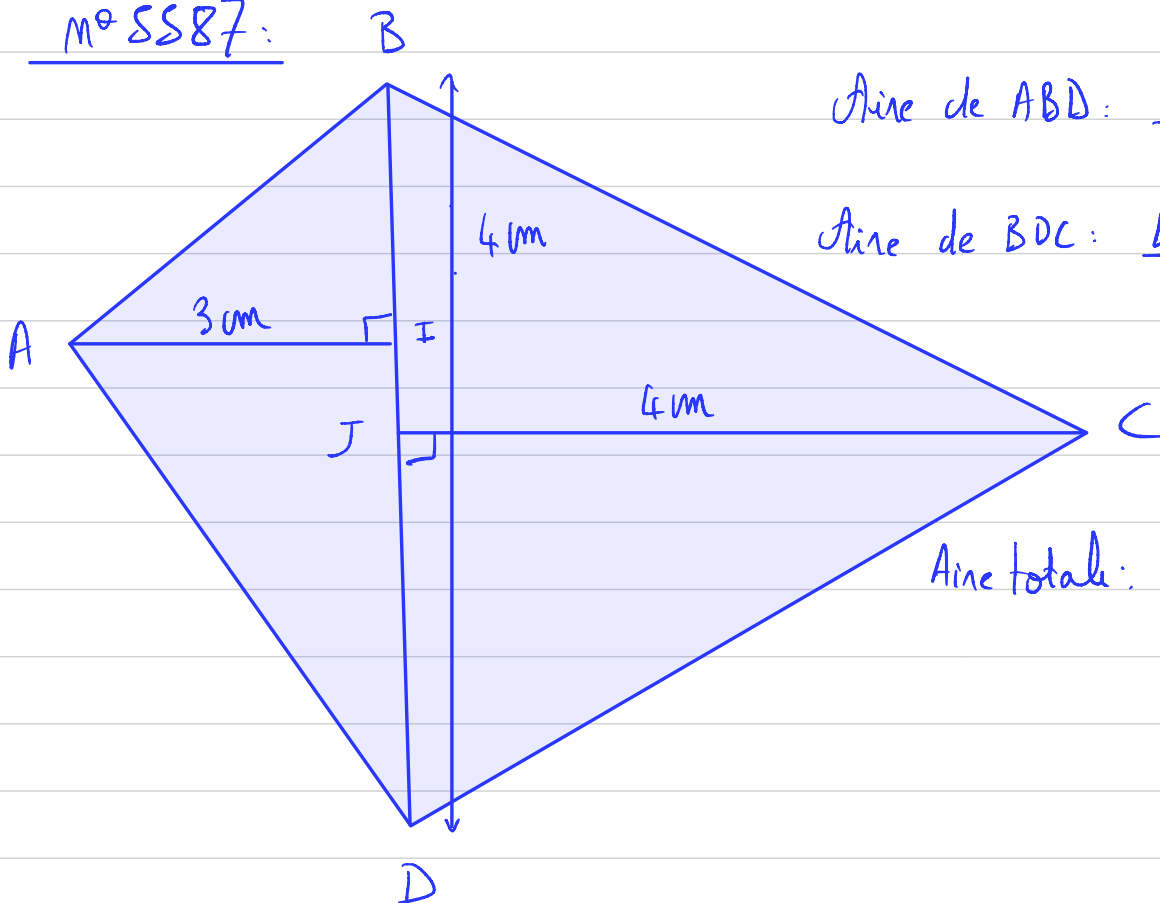
$$\text{Aire du triangle EFD} = \frac{17 \times 8}{2} = \frac{136}{2} = 68 \text{ m}^2.$$

Aire de ABC:



$$A = \frac{8 \times 6}{2} = \frac{48}{2} = 24 \text{ dm}^2.$$

n° 5587:

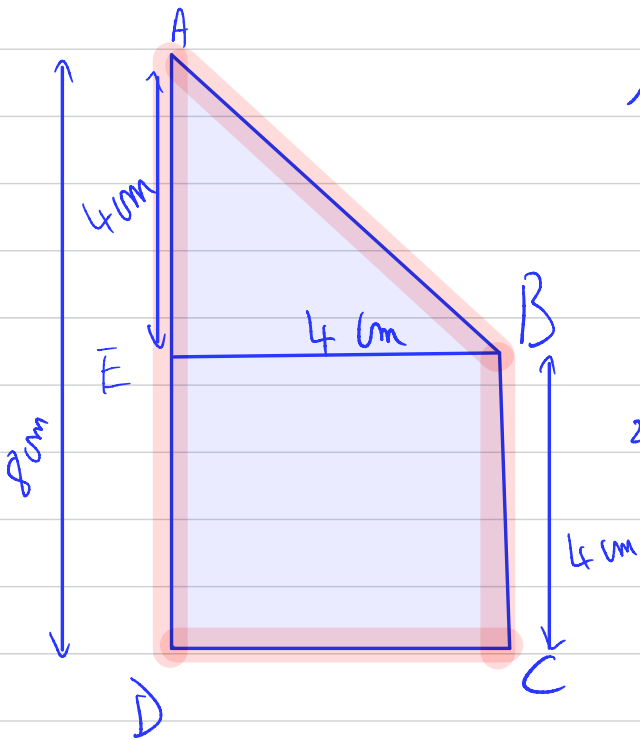


$$\text{Aire de ABD} = \frac{3 \times 4}{2} = \frac{12}{2} = 6 \text{ cm}^2.$$

$$\text{Aire de BDC} = \frac{4 \times 4}{2} = 8 \text{ cm}^2.$$

$$\text{Aire totale: } 8 + 6 = 14 \text{ cm}^2$$

1688:



1) Périmètre = $AD + DC + CB + BA$
 $= 8 + 4 + 4 + 5$
 $= 21 \text{ cm.}$

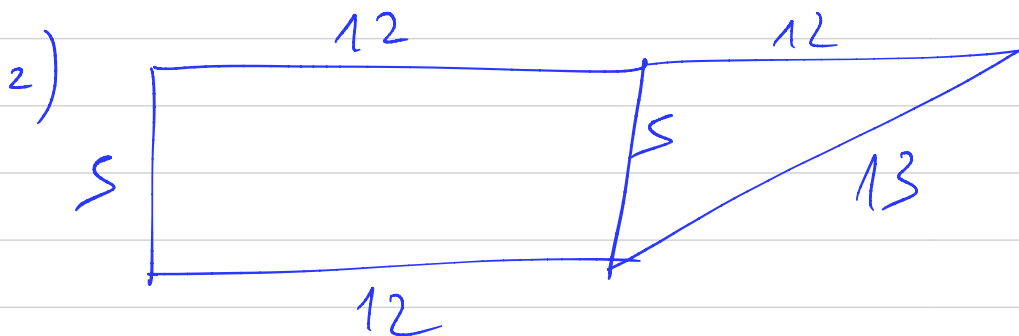
2) Aire de EBA: $\frac{4 \times 4}{2} = \frac{16}{2} = 8 \text{ cm}^2$

Aire de EDCB: $4 \times 4 = 16 \text{ cm}^2$

Aire totale $16 + 8 = 24 \text{ cm}^2$.

4227:

1) $P = 12 + 12 + 13 + 12 + 5 = 36 + 13 + 5 = 49 + 5$
 $= 54 \text{ cm.}$



triangle: $\frac{12 \times 5}{2} = \frac{60}{2} = 30 \text{ cm}^2$
rectangle: $12 \times 5 = 60 \text{ cm}^2$
total $60 + 30 = 90 \text{ cm}^2$

24/11/20 m° 1689